

LACE CROCHET PATTERN WITH LEAFS

Materials

Crochet hook 2.5 mm

Yarn

Yardage:

1.76 Oz (50g) / 185 Yrds (169m)

Yarn weight:

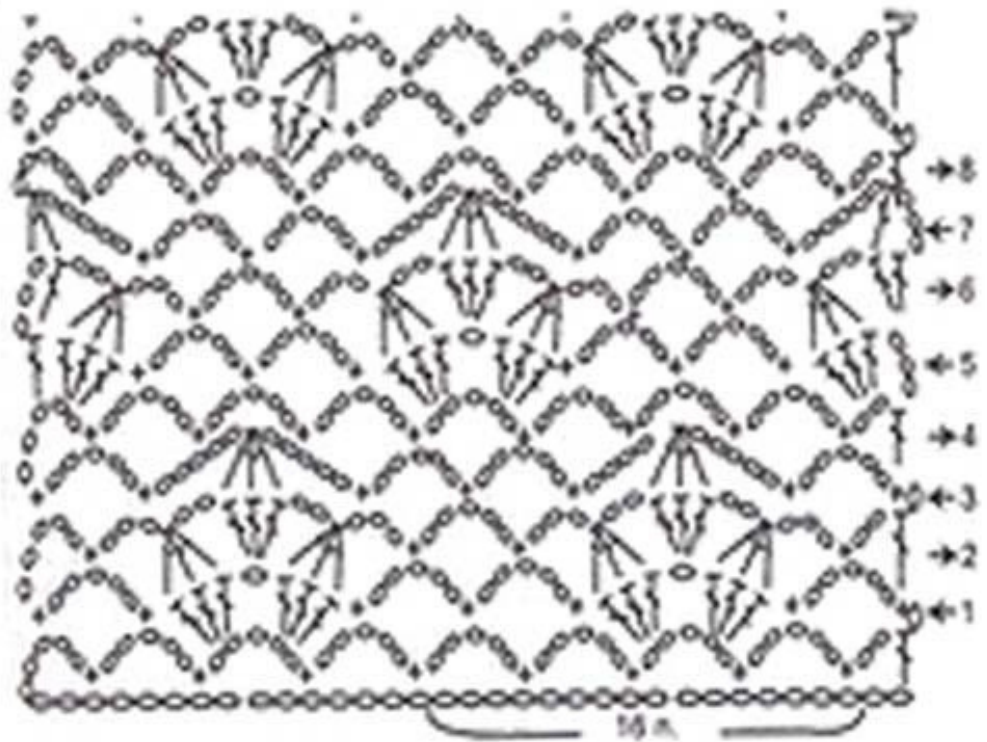
Fingering (14 wpi) / Super Fine

Fiber type:

100% mercerized cotton

Yarn Brand:

Yarn Art Begonia



Skill Level

Easy.

Follow Me



COPYRIGHT NOTICE

Copyright ©2022 MyCrochetPattern on
mycrochetpattern.com

Please contact me if you have any questions.

Crochet Symbols & Abbreviations

	- chain (ch)		- 2 double crochet closed together (dc2tog)
	- slip stitch (sl st)		- 3 double crochet closed together (dc3tog)
	- single crochet (sc)		- 2 dc cluster & 2 dc cluster closed together
	- half double crochet (hdc)		- 3 dc cluster & 3 dc cluster closed together
	- double crochet (dc)		- puff stitch (ps)
	- treble crochet (trc)		- an arranged puff
	- double treble crochet (dtrc)		- 3 double crochet cluster (3 dc cl)
	- crab stitch or reverse single crochet		- 5 double crochet cluster (5 dc cl)
	- twisted single crochet stitch		- 5 treble crochet cluster (5 dc cl)
	- solomon's knot stitch or love stitch		- 5 half double crochet popcorn (5 hdc pc)
	- single crochet back loop only (scBLO)		- 5 double crochet popcorn (5 dc pc)
	- half double crochet back loop only (hdcBLO)		- reverse 5 double crochet popcorn (5 dc pc)
	- double crochet back loop only (dcBLO)		- 5 treble crochet popcorn (5 trc pc)
	- back post single crochet (BPsc)		- loop stitch with single crochet
	- back post half double crochet (BP hdc)		- loop stitch with double crochet
	- back post double crochet (BPdc)		- 1-over-1 half double crochet cross
	- front post single crochet (FPsc)		- 1-over-1 double crochet cross
	- front post half double crochet (FP hdc)		- 1-over-1 treble crochet cross
	- front post double crochet (FPdc)		- 1-over-1 double crochet cross with 1 chain
	- 2 single crochet increase (2 sc inc)		- 1-over-2 double crochet cross
	- 3 single crochet increase (3 sc inc)		- 2-over-1 double crochet cross
	- 2 half double crochet shell (2 hdc shell)		- crossed stitch with double crochet
	- 3 half double crochet shell (3 hdc shell)		- crossed stitch with treble crochet
	- 2 double crochet shell (2 dc shell)		- Y-stitch
	- 3 double crochet shell (3 dc shell)		- 1-over-1 double crochet left cross
	- V-stitch		- 1-over-1 double crochet right cross
	- 2 double crochet shell with chain three space (2 dc shell with ch 3 space)		- 1-over-3 double crochet left cross
	- 4 double crochet shell (4 dc shell)		- 1-over-3 double crochet right cross
	- 4 double crochet shell with chain one space (4 dc shell with ch 1 space)		- front post double crochet crossed
	- 5 double crochet shell (5 dc shell)		- front post two double crochet into same stitch
	- 6 double crochet shell with chain two space (6 dc shell with ch 2 space)		- front post double crochet two together
	- 2 single crochet decrease (2 sc dec)		- front post treble crochet two together
	- 3 single crochet decrease (3 sc dec)		- chain 3 picot
	- 2 half double crochet closed together (hdc2tog)		- open picot
	- 3 half double crochet closed together (hdc3tog)		- chain 3 single crochet picot
			- inverted Y-stitch
			- slanted puff stitch
			- slanted double crochet stitch

Helpful Tutorials and Guides

- [How to read a crochet pattern](#)
- [How to weave in ends on your crochet project](#)
- [Caring for crocheted items: how to wash, iron, and store them](#)
- [How to starch crocheted items](#)
- [How to take measurements for crocheting](#)



For beginners

- [Best crochet hooks](#)
- [The best yarn for crochet](#)
- [How to use a PomPom Maker](#)
- [How to Use Stitch Markers in Crocheting](#)
- [Crochet kits](#)