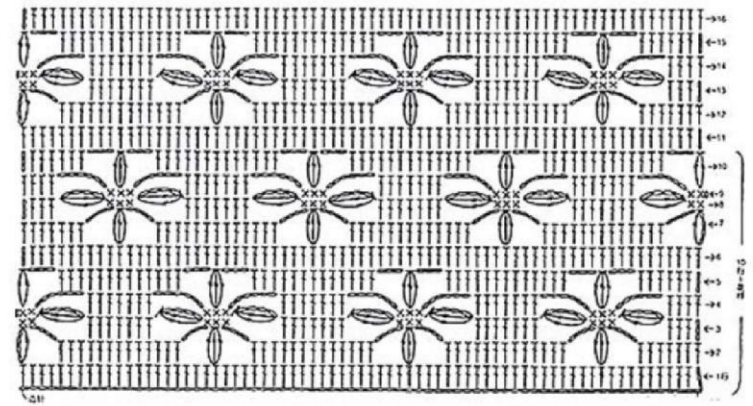


△ = 普通锁边针法，每4针，在每针
锁边及每针之间加1针，3针并1针
成花边。

☆ = 短针锁边最细密针法，在短针锁
边之间加2针短针，3针并1针
成花边。

● = 在短针之间加短针，短针锁边
与短针形成花边。

花样编织



Writing instructions to crochet

The blanket is worked from corner to corner. The border and flowers are added at the end.

The main part of the blanket

Foundation chain: 150 + 1.

Row 1: 3 ch (3 ch cost as 1 dc), 1 dc into 4 ch, *1 dc into next ch, rep from * to the end, turn.

Row 2: 4 ch, 1 trc into 1 dc, *4 ch, skip 3 dc, 13 dc, 4 ch, skip 3 dc, 3 trc cluster into next dc, rep from * to the end, turn.

Row 3: 3 ch, 3 dc, 4 ch, 2 trc into 1 ch, skip 3 dc, 1 sc into arch, 1 sc into cluster, *1 sc into arch, 4 ch, 2 trc into 1 ch, skip 3 dc, 7 dc, 4 ch, 2 trc into 1 ch, skip 3 dc, 1 sc into arch, 1 sc into cluster, rep from * to the end, turn.

Row 4: 1 ch, 2 sc, 6 ch, *7 dc, 6 ch, 3 sc, 6 ch, rep from * to the end, turn.

Row 5: 3 ch, 3 dc, 3 dc into arch, 3 ch, skip 1 sc, 3 trc cluster into next sc, *3 ch, skip 1 sc, 3 dc into arch, 7 dc, 3 dc into arch, 3 ch, skip 1 sc, 3 trc cluster into next sc, rep from * to the end, turn.

Repeat rows 1 – 5 until you have reached your desired length.

Border 1

Row 1: 1 ch, sc. At the angles of the rug: 2 ch.

Row 2: 4 ch, *1 dc, 1 ch, rep from * to the end, 1 sl st. At the angles of the rug: 1 trc.

Row 3: 4 ch, *1 dc into dc, 1 ch, rep from * to the end, 1 sl st. At the angles of the rug: 1 dc into dc, 1 sc, 1 dc into same dc, 1 sc, 1 dc into same dc.

Row 4: 4 ch, *1 dc into dc, 1 ch, rep from * to the end, 1 sl st. At the angles of the rug: 1 dc into dc, 1 sc, 1 dc into same dc, 1 sc, 1 dc into same dc.

Row 5: 2 ch, *1 sc into ch, 1 ch, rep from * to the end, 1 sl st.

Row 6: 3 ch, 1 dc into 1 ch, 1 ch, 1 dc into same ch, skip: 1 sc, 1 ch, 1 sc, 1 ch; *1 dc into 1 sc, 1 ch, 1 dc into same sc, 1 ch, 1 dc into same sc, 1 ch, 1 dc into same sc, 1 ch, 1 dc into same sc, skip: 1 ch, 1 sc, 1 ch, 1 sc; 1 dc into 1 ch, 1 ch, 1 dc into same ch, 1 ch, 1 dc into same ch, 1 ch, 1 dc into same ch, 1 ch, 1 dc into same ch, skip: 1 sc, 1 ch, 1 sc, 1 ch; rep from * to the end, 1 sl st. At the

angles of the rug: 1 dc into 1 sc, 1 ch, 1 dc into same sc, 1 ch, 1 dc into same sc, 1 ch, 1 dc into same sc, 1 ch, 1 dc into same sc, 1 ch, 1 dc into same sc.

Row 7: 1 ch, *1 sc into ch, 2 or 4 ch depending on the scheme, rep from * to the end, 1 sl st.

Row 8: 1 ch, *1 sc into arch, 3 or 5 ch depending on the scheme, rep from * to the end, 1 sl st.

Border 2

Row 1: 2 ch, *1 sc into row 2 border 1, 1 ch, rep from * to the end, 1 sl st.

Row 2: 3 ch, 1 dc into 1 ch, 1 ch, 1 dc into same ch, skip: 1 sc, 1 ch, 1 sc, 1 ch; *1 dc into 1 sc, 1 ch, 1 dc into same sc, 1 ch, 1 dc into same sc, 1 ch, 1 dc into same sc, 1 ch, 1 dc into same sc, skip: 1 ch, 1 sc, 1 ch, 1 sc; 1 dc into 1 ch, 1 ch, 1 dc into same ch, 1 ch, 1 dc into same ch, 1 ch, 1 dc into same ch, 1 ch, 1 dc into same ch, skip: 1 sc, 1 ch, 1 sc, 1 ch; rep from * to the end, 1 sl st. At the

angles of the rug: 1 dc into 1 sc, 1 ch, 1 dc into same sc, 1 ch, 1 dc into same sc, 1 ch, 1 dc into same sc, 1 ch, 1 dc into same sc, 1 ch, 1 dc into same sc.

Row 3: 1 ch, *1 sc into ch, 2 or 3 ch depending on the scheme, rep from * to the end, 1 sl st.

Row 4: 1 ch, *1 sc into arch, 3 or 4 ch depending on the scheme, rep from * to the end, 1 sl st.

Flowers

Begin with a Magic Circle, 1 ch.

Row 1: 5 ch, *1 dc into circle, 2 ch, rep from * 4 times, 1 sl st.

Row 2: 1 ch, *1 sc into arch, 1 ch, 3 dc into arch, 1 ch, 1 sc into arch, rep from * to the end, 1 sl st.

Row 3: 1 ch, *1 back post sc, 5 ch, rep from * to the end, 1 sl st.

Row 4: 1 ch, *1 sc into arch, 1 hdc into arch, 5 dc into arch, 1 hdc into arch, 1 sc into arch, rep from * to the end, 1 sl st.

Row 5: 1 ch, *1 back post sc, 6 ch, rep from * to the end, 1 sl st.

Row 6: 1 ch, *1 sc into arch, 1 hdc into arch, 7 dc into arch, 1 hdc into arch, 1 sc into arch, rep from * to the end, 1 sl st.